

Knoxville Homeless Management Information System

website: <https://knoxhmis.sworps.tennessee.edu>

call: (865) 974 9142

email: hmissupport@utk.edu

Knox County Families Served: At-A Glance

9,420 individuals were served in Knox County between 7/1/13 and 7/1/14, of which 17% were in a family household. For this report, families are defined as households containing children younger than 18. During the report period, 937 individuals served were children.

Within families served, 502 individuals identified as head of household. Figure 1-1 displays frequency of "Primary Reason for Homelessness" as reported by the head of household.

Head of Household Primary Reason for Homelessness

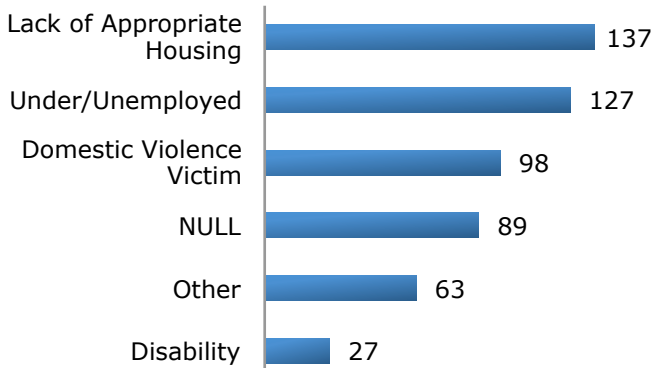


Figure 1-1 'Lack of Appropriate Housing' includes: eviction, no affordable housing, substandard housing, mortgage foreclosure. 'Under/Unemployed' includes: loss of job, unemployment/low income. 'Disability' includes: mental health, medical, substance abuse. 'Other' includes: utility shutoff, criminal activity, loss of transportation, health/safety. NULL is uncollected data.

Figure 1-3 displays percentages of family household type.

Types of Family Households

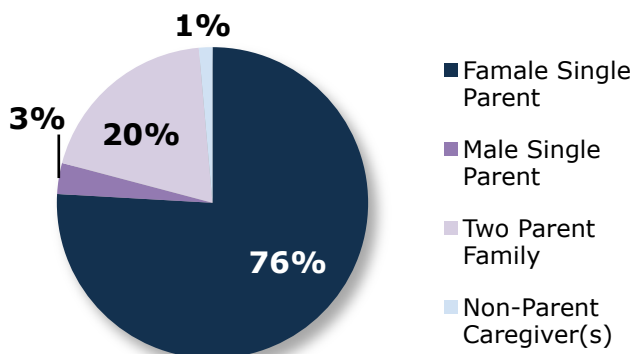


Figure 1-3 Non-Parent Caregiver(s) includes Grandparent(s) and child & Non-Custodial caregiver(s).

Figure 1-2 displays the "Residence Prior" of individuals in families.

Residence Prior to Homelessness

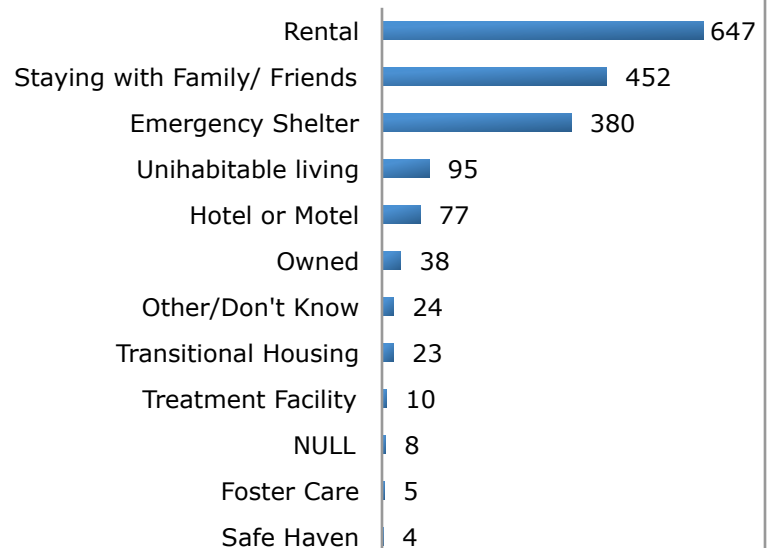


Figure 1-2 There are more reports of residence prior than individuals due to multiple program entries. 'Treatment Facility' is the combined count of 'psychiatric hospital' and 'substance abuse facility'. NULL is uncollected data.

Figure 1-4 shows the number of family households created during each year, starting 7/1/08.

Households Created

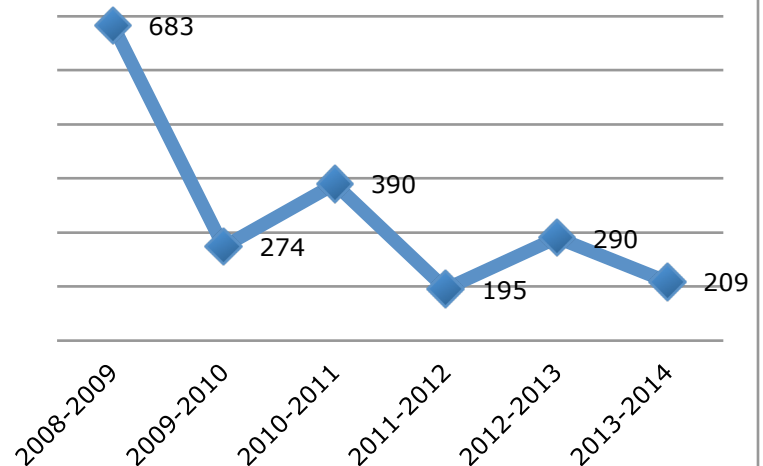


Figure 1-4 A total of 518 families served during report period; 209 were newly created in KnoxHMIS during report period.

Knoxville Homeless Management Information System

website: <https://knoxhmis.sworps.tennessee.edu>

call: (865) 974 9142

email: hmissupport@utk.edu

Figure 2-1 displays housing program exit destination outcomes (positive or negative)* compared with length of stay. This data seems to suggest positive housing outcomes are associated with longer program service.

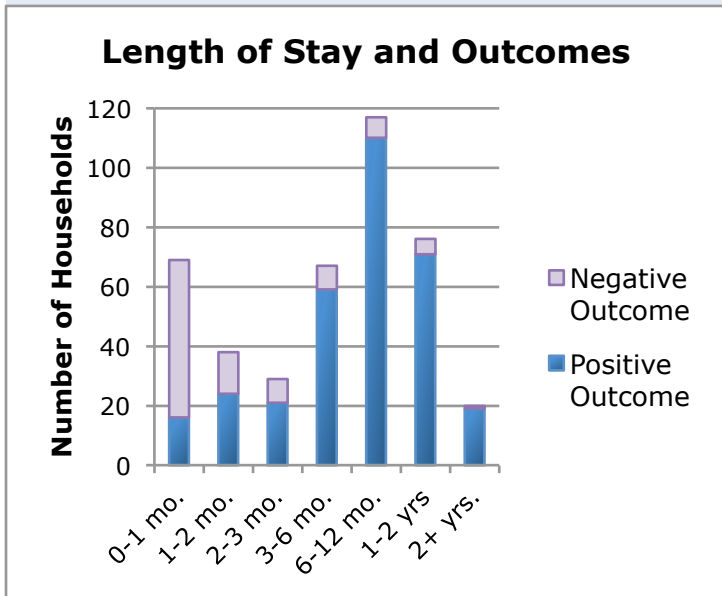


Figure 2-1 *Positive Exit Destination= Owned, Rental, or PSH. Negative Exit Destination= Staying with family/friends, temporary housing, emergency shelter, foster home, treatment facility, don't know, jail, safe haven, or hotel/motel.

46% of family head of households reported having at least one disability. Figure 2-3 lists disabilities reported by family of household.

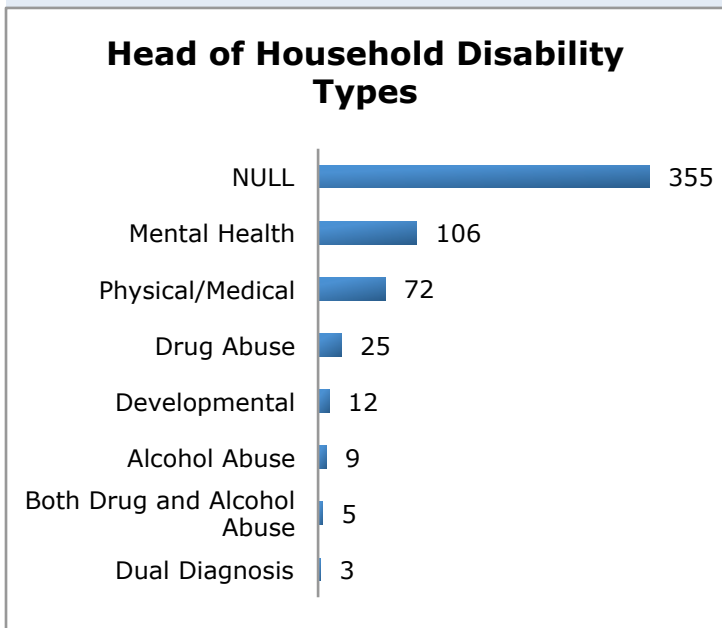


Figure 2-3 Chronic Health Condition combined with Physical/Medical. NULL represents uncollected data on disability type for clients who answered 'yes' to having a disability.

Figure 2-2 represents positive and negative outcomes to provide a more detailed account of Figure 2-1.

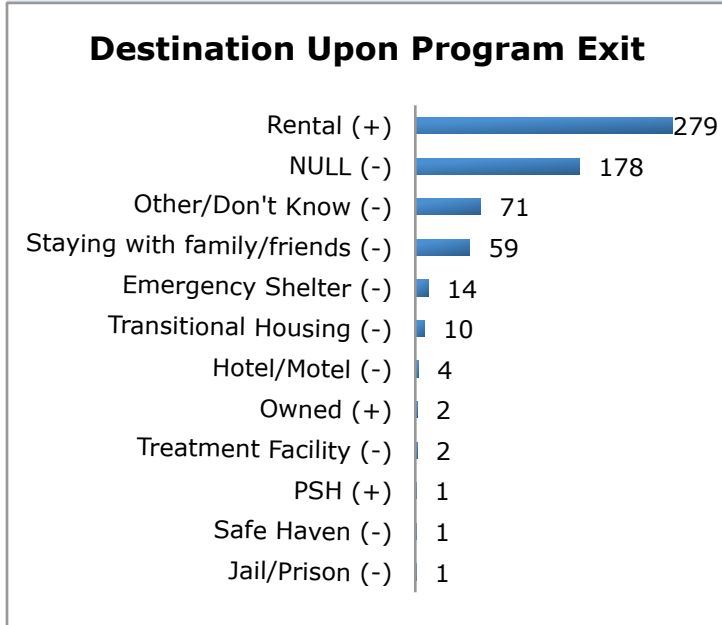


Figure 2-2 NULL represents active households which do not have an exit destination. (+) is a positive exit destination and (-) is a negative exit destination.

Children define the category "family," and during this report period 937 were entered into KnoxHMIS, which is a 62% decrease compared to July 2012-2013. Figure 2-4 represents ages at entry of the 937 children, separated by gender.

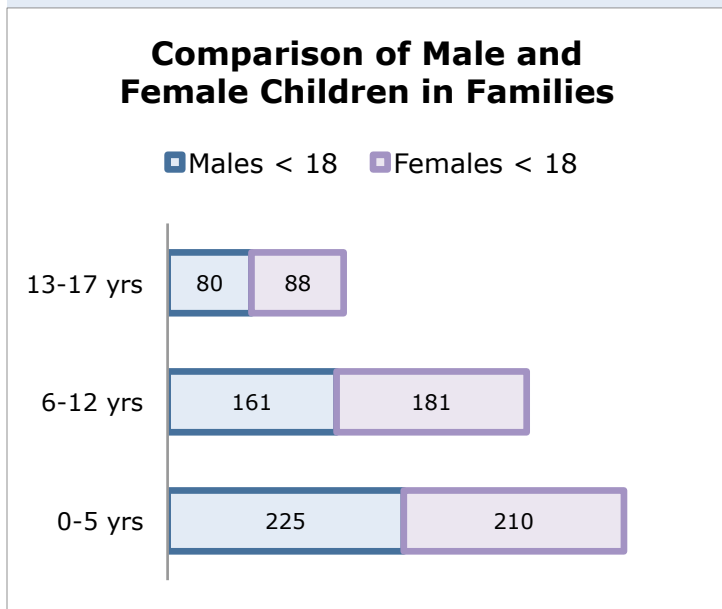


Figure 2-4 945 children reported in this figure because some had multiple KnoxHMIS entries.